

THOMPSON'S  
LONDON

EST. 1982



**ALDO BALDING &  
LEWIS HAZELWOOD HORNER  
INFLUENCES**





ALDO BALDING *Océan* Oil on canvas 20 x 23.5 inches

Every artist takes inspiration from their influences, which in turn are passed down across generations and disciplines. When he was still an aspiring artist, Lewis looked to Aldo's painting for influence and personal guidance. Today, they share inspiration from master painters Sorolla, Zorn and Munnings.

Sorolla is known as the "master of light," and this skill is at the forefront of Lewis's and Aldo's practice. Both artists immerse themselves in their scenes, painting "en plein air" to enrich their pieces with spontaneity and vitality that cannot be evoked in the studio alone.

Lewis and Aldo masterfully capture the atmosphere of a scene, be it a busy pub scene or a tranquil French interior, bringing a 21st-century approach to traditional painting.

ALDO BALDING  
*Les Cours à Domaine d'Audoubert*  
Oil on canvas 13 x 10 inches



THOMPSON'S  
LONDON — EST. 1982

3 Seymour Place,  
London. W1H 5AZ  
Tel: +44 (0)207 935 3595  
Email: [enquiries@thompsonsgallery.co.uk](mailto:enquiries@thompsonsgallery.co.uk)  
[www.thompsonsgallery.co.uk](http://www.thompsonsgallery.co.uk)

Monday to Friday: 10:00 - 18:00  
Saturday: 10:30 - 17:30  
Sunday: Closed

## ALDO BALDING & LEWIS HAZELWOOD HORNER **INFLUENCES**

12 October - 29 October 2022

An invitation to attend the Private View, both artists will be in attendance

Tuesday 11 October, 6pm - 8pm

RSVP to [enquiries@thompsonsgallery.co.uk](mailto:enquiries@thompsonsgallery.co.uk)

All works are for sale on receipt of this catalogue. Both artists have produced a wide selection of work and the entire exhibition can be viewed on line [www.thompsonsgallery.co.uk](http://www.thompsonsgallery.co.uk)



## LEWIS HAZELWOOD HORNER RBA

Featured as Thompson's 'One to Watch' in 2019, London-based painter Lewis Hazelwood-Horner studied at Byam Shaw School of Art and the distinguished London Atelier of Representational Art. Lewis won the Columbia Threadneedle Prize in 2016, and was inducted into the Royal Society of British Artists in 2018 at the age of 24.

Other accolades include the 2017 Highly Commended De Laszlo Medal for Excellence, which is awarded to an artist under 35 for the best work from life. He also received the The Marianne VonWerther Memorial Award/Rome Scholarship

in 2015 and a scholarship from the Royal Society of British Artists in 2010.

In 2009, Lewis won The Jack Petchey Award for contribution to art to the London Borough of Barnet.

Lewis's work is concerned with the craft of the artist's practice, mainly focusing on social rituals of gathering. Wielding exceptional painterly skill and a firm command of draughtsmanship, he produces scenes that are infused with wit and gritty realism.



*First Race, Ascot 2022* Oil on canvas 12 x 24 inches



*Race Day, Ascot 2022* Oil on canvas 23 x 29 inches



## ALDO BALDING

Renowned British painter Aldo Balding currently lives and works in the South of France. He began his career as an illustrator before relocating to France in pursuit of painting full-time.

Aldo Balding is a regular exhibitor within the Royal Society of Portrait Painters. He was awarded 'Best of Show' in the 2013 Boldbrush Competition; was an Arc Salon Finalist in 2004, 2006 and 2016; and took first prize in the NSE Exhibition and Artist International competition.

Aldo's relationship with Thompson's, which spans over a decade, began after he was invited to submit portraits for a group exhibition. In recent years, his revived appreciation of nature and the way light falls on a subject has informed a new way of painting. The six months of summer, and golden, glowing sunlight in the South of France provides him with endless inspiration – augmenting and pushing colour, capturing feelings of warmth and cool. This body of work depicts scenes both travelled and found in everyday life.



*Domaine Des Jasses* Oil on canvas 16 x 20 inches



*Jardin à Chabeuil* Oil on canvas 15 x 22 inches

*Intérieure à Chabeuil* Oil on canvas 39.5 x 29.5 inches (right)







*Van Dough*  
Oil on canvas 23 x 27.5 inches



*Nocturnal Spirits*  
Oil on canvas 17.5 x 14 inches (left)

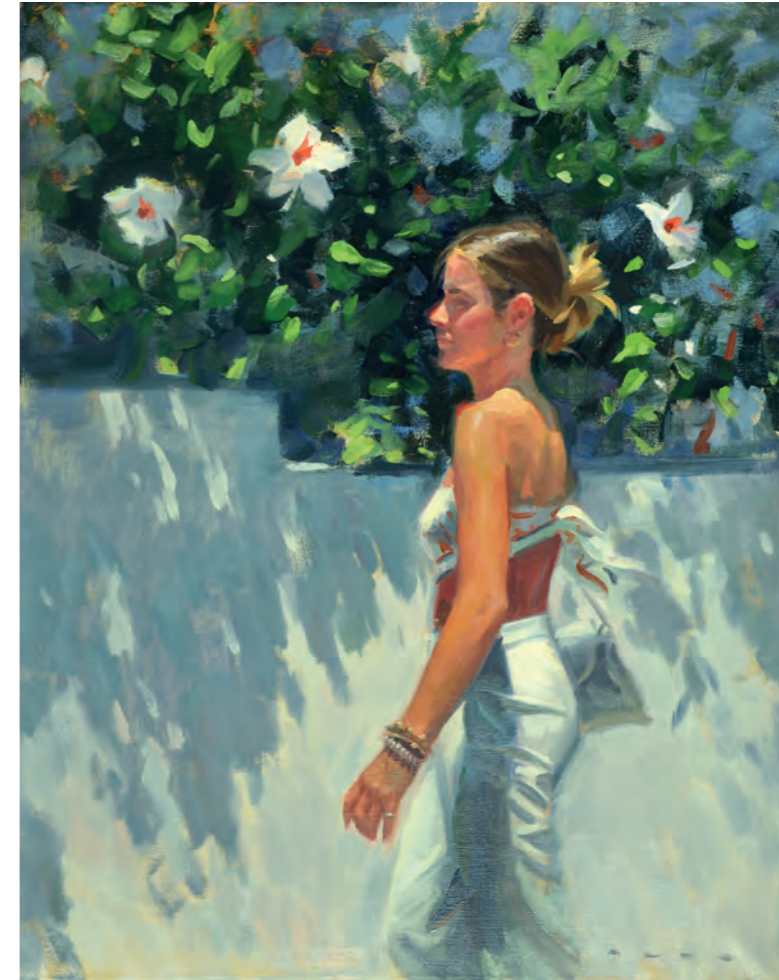
*Hop Farm Smoking*  
Oil on canvas 47 x 48 inches (right)







*Cabane D'huitres, Arcachon* Oil on canvas 28 x 36 inches



*Lily Orange* Oil on canvas 36 x 28 inches





*Tapping the Admiral* Oil on canvas 20 x 34 inches



*Heavy Weight to Carry* Oil on canvas 20 x 24 inches



*Up in the Arms* Oil on canvas 39 x 39 inches





*Petit Dejeuner, Toulouse* Oil on canvas 29 x 21 inches



*Pont à Orléans*  
Oil on canvas 14 x 18 inches



*Domaine d'Audoubert*  
Oil on canvas 24 x 20 inches





*Les Deux Alps I* Oil on canvas 36 x 24 inches



*First Run* Oil on canvas 36 x 23 inches



*A Moment of Bliss* Oil on canvas 25 x 32 inches





*Glycine Violet* Oil on canvas 36 x 28 inches

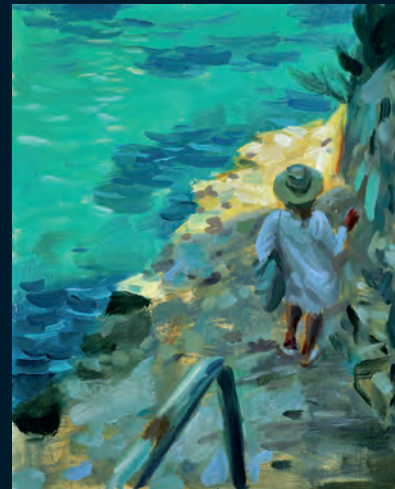


ALDO BALDING *Domaine d'Audabiac* Oil on canvas 24 x 20 inches





ALDO BALDING *Bidart*  
Oil on canvas 9.5 x 12 inches



ALDO BALDING *Turquoise Creek*  
Oil on canvas 12 x 9.5 inches

THOMPSON'S LONDON  
3 SEYMOUR PLACE,  
LONDON. W1H 5AZ  
TEL: +44 (0)207 935 3595  
Email: [enquiries@thompsonsgallery.co.uk](mailto:enquiries@thompsonsgallery.co.uk)

THOMPSON'S ALDEBURGH  
175 HIGH STREET, ALDEBURGH.  
SUFFOLK. IP15 5AN  
TEL: +44 (0)1728 453 743  
Email: [john@thompsonsgallery.co.uk](mailto:john@thompsonsgallery.co.uk)

THOMPSON'S HARPENDEN  
13 CHURCH GREEN,  
HARPENDEN. AL5 2TW  
TEL: +44 (0)1582 329 932  
Email: [harpenden@thompsonsgallery.co.uk](mailto:harpenden@thompsonsgallery.co.uk)