

THOMPSON'S
ALDEBURGH

STEPHANIE REW

Gilded

Narcissus

Oil, Egg Tempera, Optical Lens
and 24ct gold leaf on panel
26 x 16 inches
(detail)

This is a water-gilded panel in 24ct gold, using Early Renaissance techniques of raised gesso (pastiglia), etching into egg tempera (Sgraffito) and indirect oil painting. A concave optical lens was glass gilded with gold leaf to create a tiny mirror set into the panel - So you can see yourself looking in.

The painting depicts a self assured woman, clearly wanting to be looked at, and while looking at her you are reflected back at yourself, hinting at most people's self awareness



STEPHANIE REW

Gilded

We request the pleasure of your
company at the Private View on
Saturday 18th September 2021
10am-4pm

THOMPSON'S
ALDEBURGH

175 High Street, Aldeburgh
Suffolk. IP15 5AN

Tel: +44 (0)1728 453 743

john@thompsonsgallery.co.uk

www.thompsonsgallery.com

Monday to Friday: 10am - 5pm

Saturday: 10am - 5pm

Sunday 11am-5pm

All paintings are for sale on receipt of this catalogue.

More works can be viewed on our website www.thompsonsgallery.com

STEPHANIE REW

After eight years of representation in mixed and two person shows, Thompson's Gallery Aldeburgh are delighted to be hosting our first solo exhibition with award winning artist Stephanie Rew.

Stephanie Rew (b 1971) is a Scottish painter based in Edinburgh. Her highly detailed figurative paintings are in collections across the UK and Europe and she is gaining considerable international interest in her work.

Stephanie won the Elizabeth Greenshields Foundation Bursary soon after graduating from Duncan of Jordanstone College of Art in Dundee and since then has had numerous exhibitions in the UK. She curated the first Women Painting Women Exhibition in the UK as part of the WPW (R) evolution movement in 2013. She recently won the 'Best Nude' Award in 2018 and the FWSD Award in 2019 in Art Renewal Centre Salon, is a finalist in the ModPortrait17 and ModPortrait19 Award held in Spain. She was a finalist at the Scottish Portrait Award 2017 and has exhibited at MEAM Barcelona in both 'Women Painting' exhibitions held in 2019/2020 to celebrate International Women's Day.

"Creating this show has been a long and lovely process. I was given a decent amount of time to do it which is a rare thing.

Recently I have been incorporating gold leaf into my work, exploring the relationship between the decorative reflective gold leaf surface and a fully rendered oil painting. The design and pattern of the surface and textiles have become an important part of my painted compositions.

Making the gold panels is a slow and painstaking process and can take months to complete so to be able to make 10 panels at one time was an absolute luxury. Some of these panels I have been working on for over a year, leaving them to 'marinate' for a while I work on other paintings.

These paintings have cohesion to them, they have grown and developed very slowly together, which gives them a harmony. Recent times have been very difficult for everyone and this show is my way of adding something bright and beautiful into the world, as right now I believe we need as much beauty as we can find".

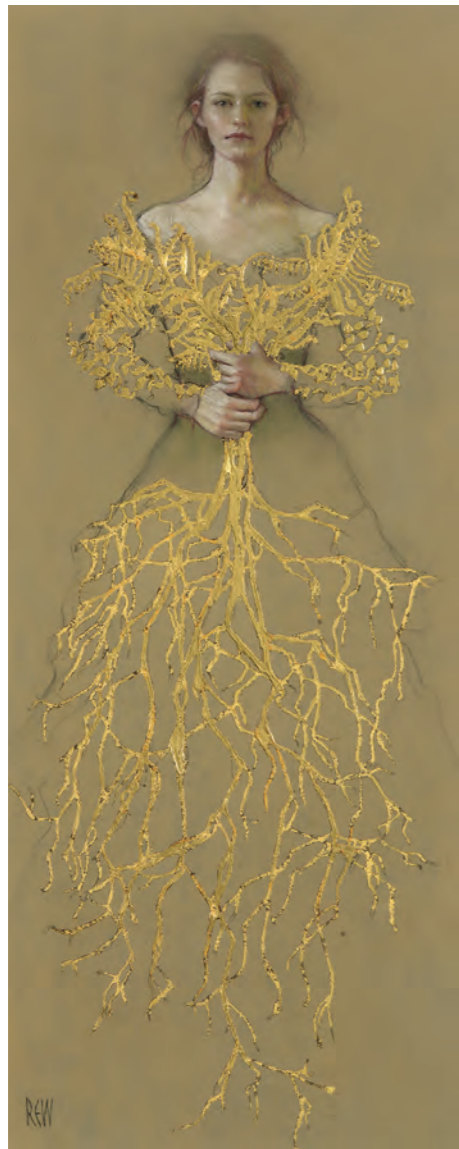




Floris Orientalis
Oil on linen
32 x 24 inches



Red Brocade Oil, Egg Tempera and 24ct gold leaf on panel 17 x 12 inches



Elements - Earth Pastel & 24ct gold leaf on card 20 x 9 inches



Elements - Air Pastel & 24ct gold leaf on card 20 x 9 inches

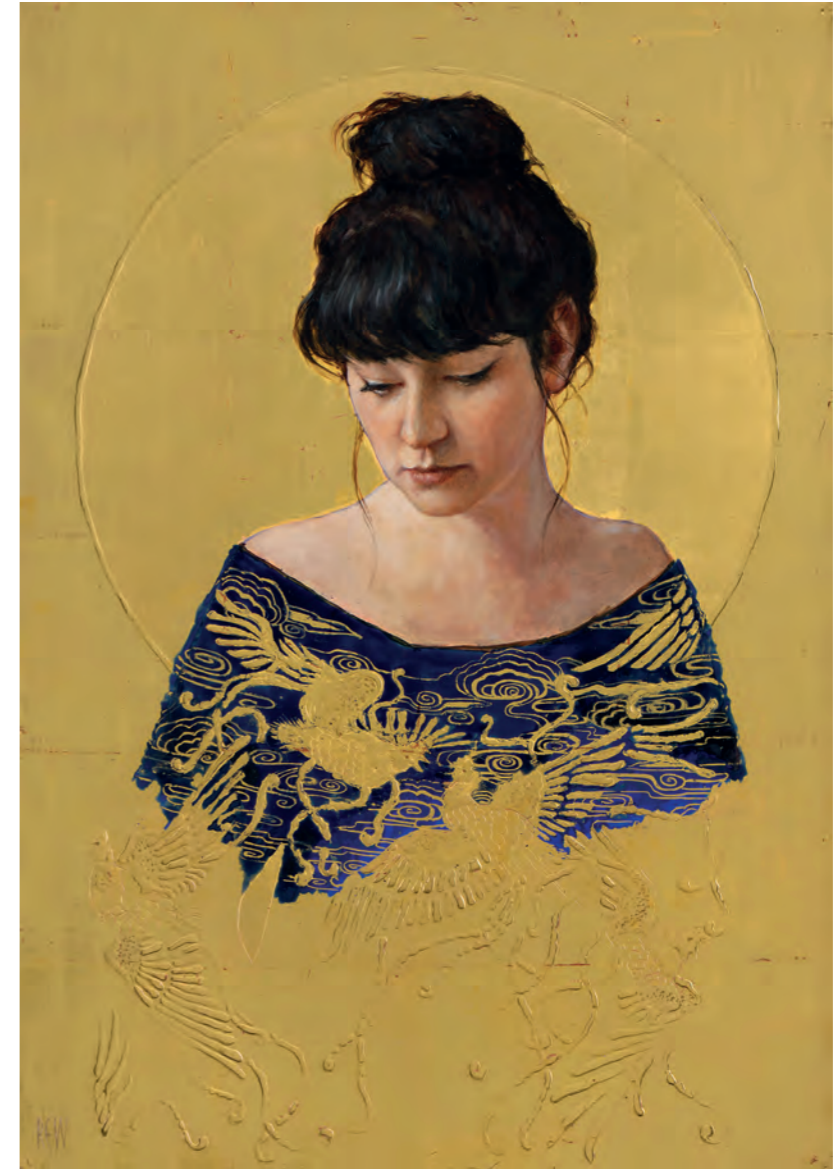


Deeper into the Blue
Oil on canvas 35 x 24 inches



Birds Fly

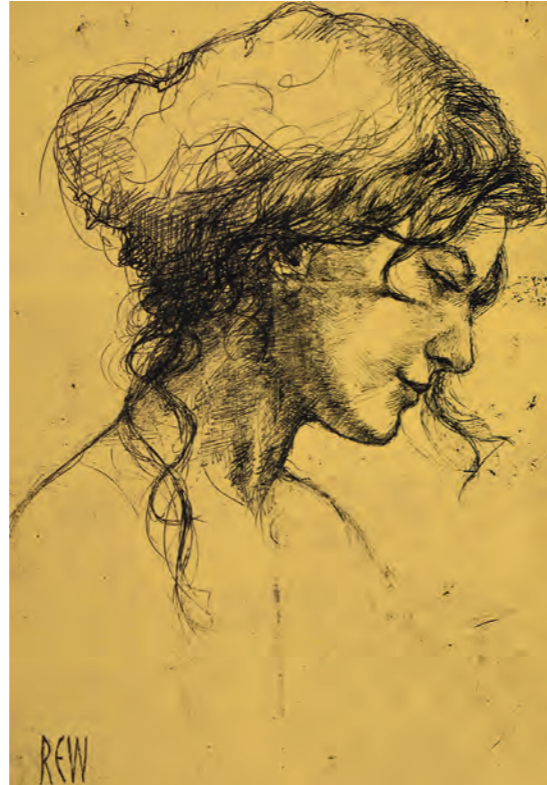
Oil, Egg Tempera and
24ct gold leaf on panel
26 x 16 inches



Phoenix Blue Oil, Egg Tempera and 24ct gold leaf on panel 17 x 12 inches



Study of Beth in Profile
Eglomise 'Etching on 24ct Gilded Glass' 8 x 6 inches



Study of Aleks for The Alchemist
Eglomise 'Etching on 24ct Gilded Glass' 8 x 6 inches

Duality Oil on linen 39 x 32 inches (right)





Gemini Oil and 24ct gold leaf on panel 20 x 16 inches

175 High Street, Aldeburgh, Suffolk. IP15 5AN Tel: +44 (0)1728 453 743 Email: john@thompsonsgallery.co.uk

3 Seymour Place, Marylebone, London, W1H 5AZ Tel: +44 (0)207 935 3595 Email: enquiries@thompsonsgallery.co.uk

www.thompsonsgallery.co.uk